

In order to be able to react to different use cases, a modular, flexible structure is needed. For this purpose, used wood and simple threaded rods are assembled into individual, interconnectable elements with the help of digital design tools. These digital tools also provide the community with both the blueprint for the elements and

suggestions for later interconnection. The foldable structures are 40 by 40 centimeters and can be closed by an interlocking plate. They are stored in the core pavilion by suspending them within the walls. In this way, they also serve to divide it into sections for flexible response to needs.

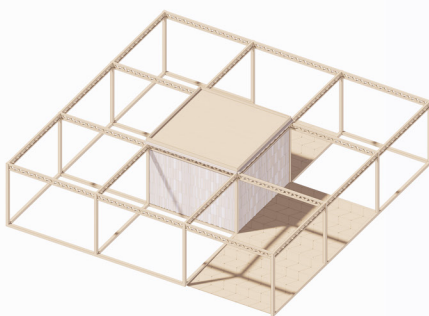
The pavilion is a fixed structure, also built from used wood and used formwork beams. The concept is expandable and can grow over time. A fixed roof provides shelter for the core area and offers flexible shading elements. Through the community, the project comes alive, gets appropriated and grows.

KULTURKIOSK FREIBURG

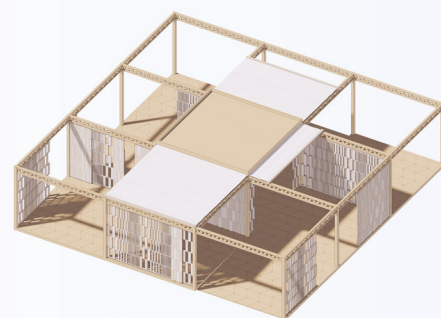
a community project for Stühlinger Kirchplatz



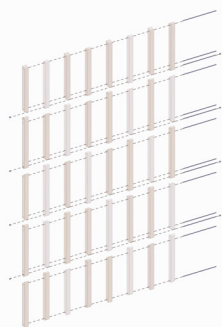
Stühlinger Kirchplatz- Freiburg



core structure - closed



core structure - open



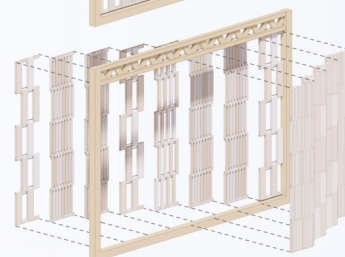
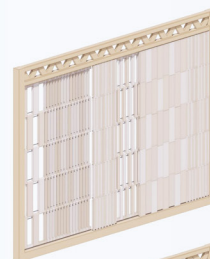
computer aided construction



folding components



stacking components



storing components in the pavilion

